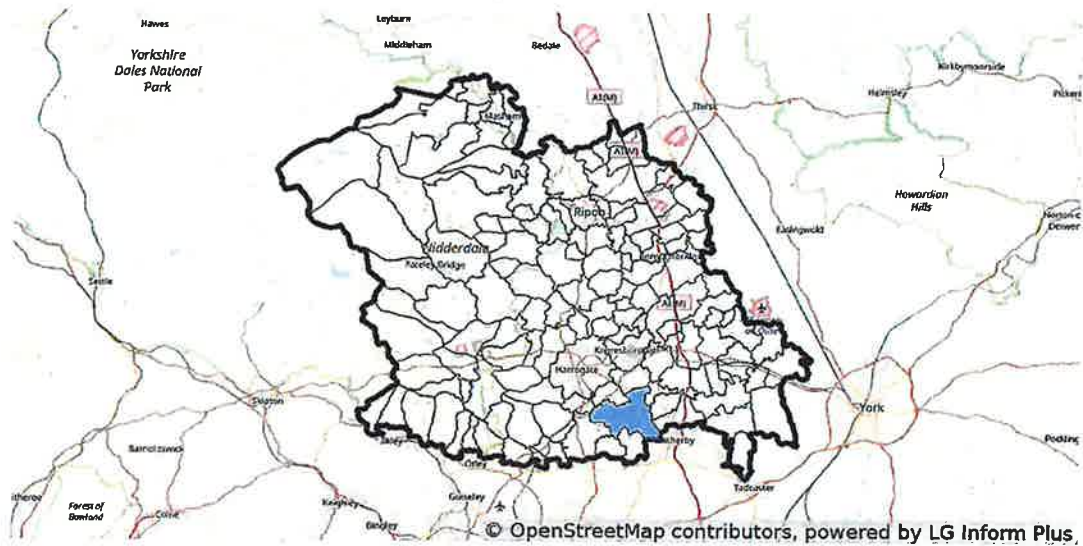


Harrogate District Parish Profiles

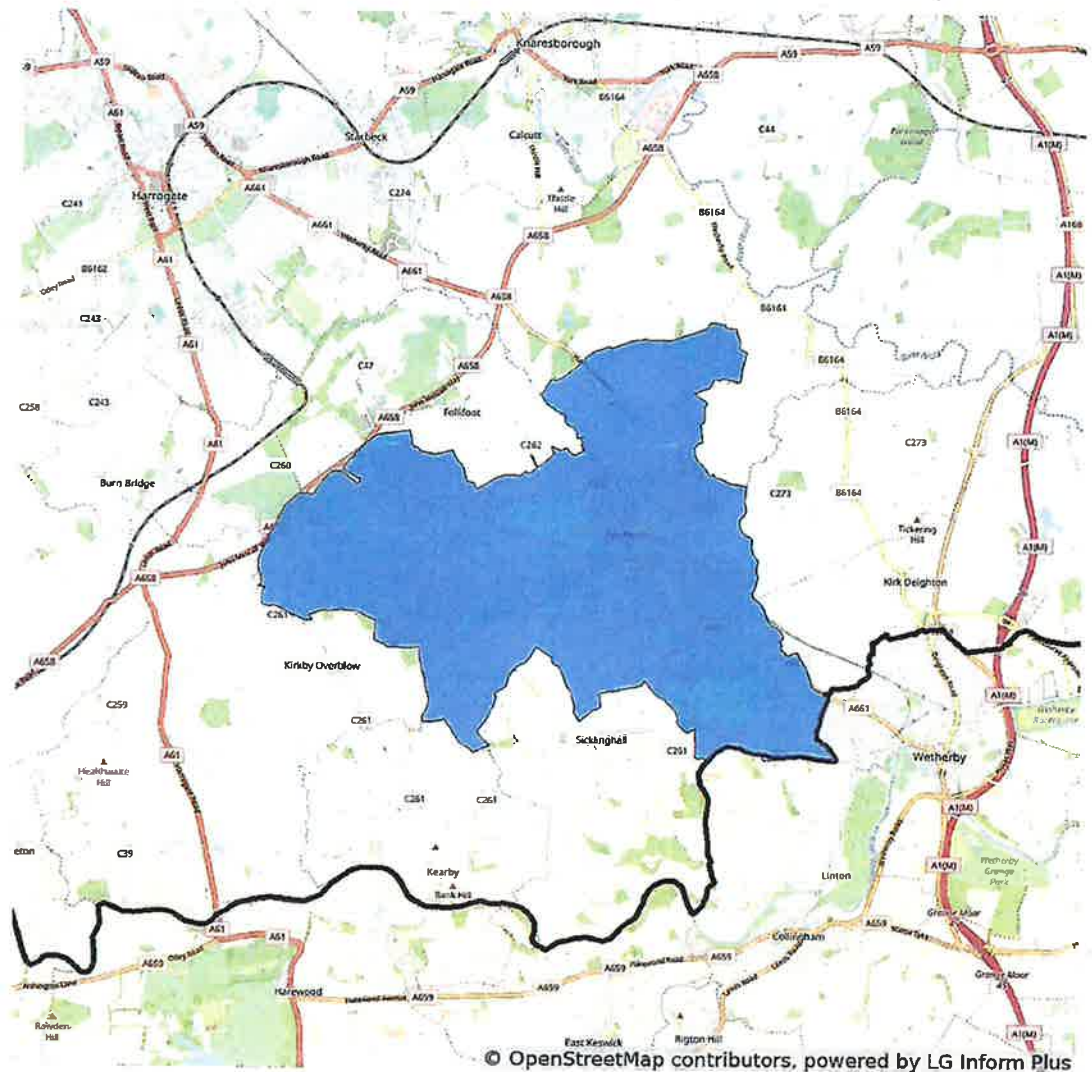
Parish overview

Spofforth with Stockeld is one of 140 civil parished and non-civil parished areas within the district. It covers an area of 2,116 hectares representing 1.62% of the total Harrogate District area of 130,794 hectares. Spofforth with Stockeld is home to 1,169 residents compared to 156,300 residents across the Harrogate District.

Location within district



Parish boundaries

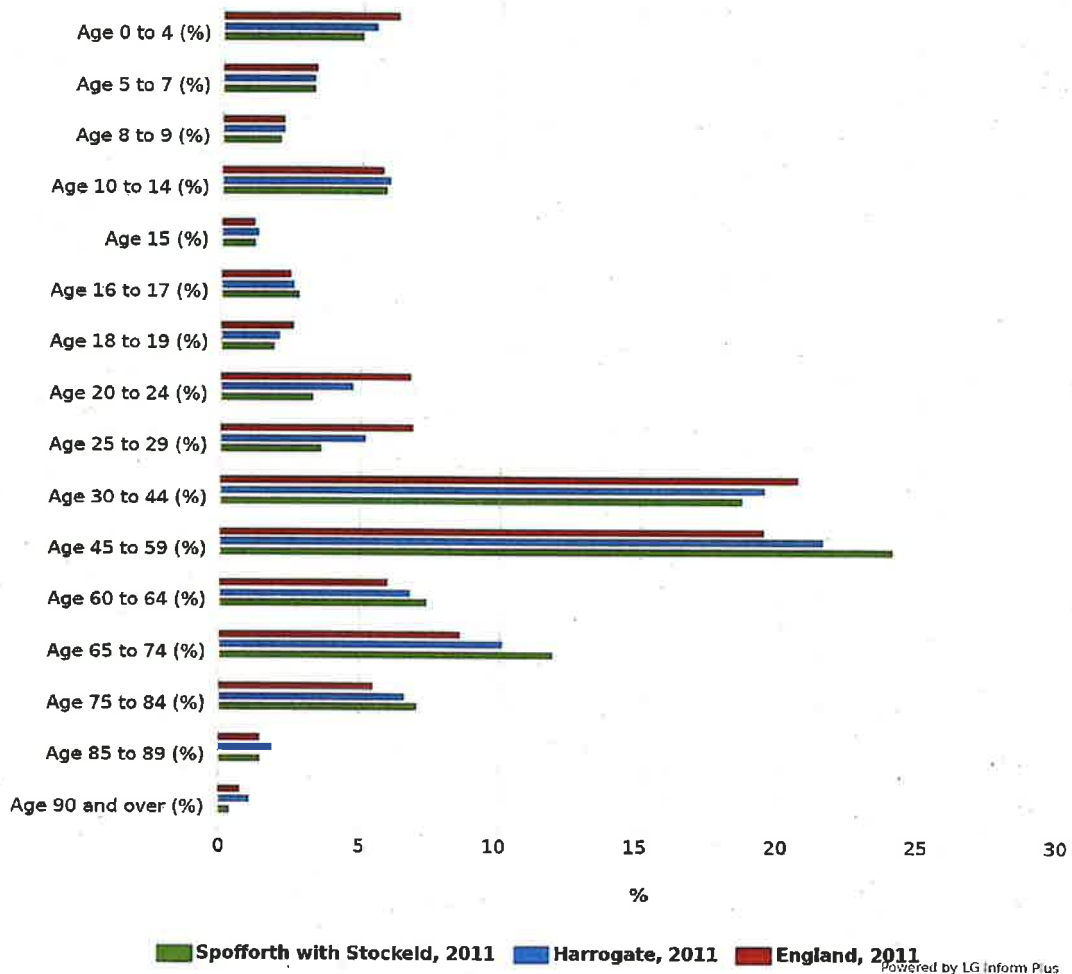


Age

The mean age of the Spofforth with Stockeld Civil parish/community and non-civil parished area population is 44 years compared to a mean age of 42 years for residents in the whole of Harrogate. The predominant age band in Spofforth with Stockeld Civil parish/community and non-civil parished area is Age 45 to 59 which represents 24.00% of the population. Across the district as a whole, a significant part of the population is either approaching or in retirement age, increasing demand on supporting services and reducing the recruitment pool in the local economy.

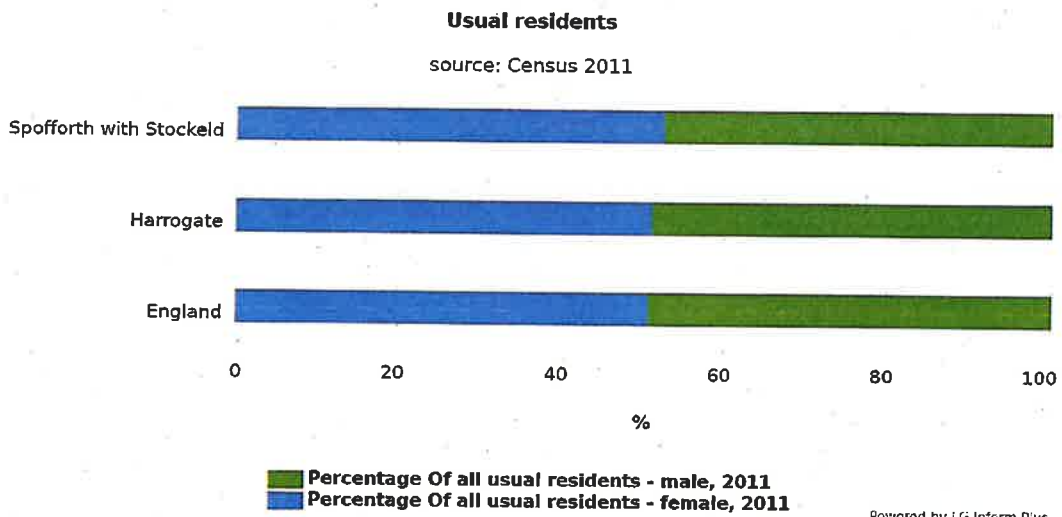
Age structure

source: Census 2011



Gender

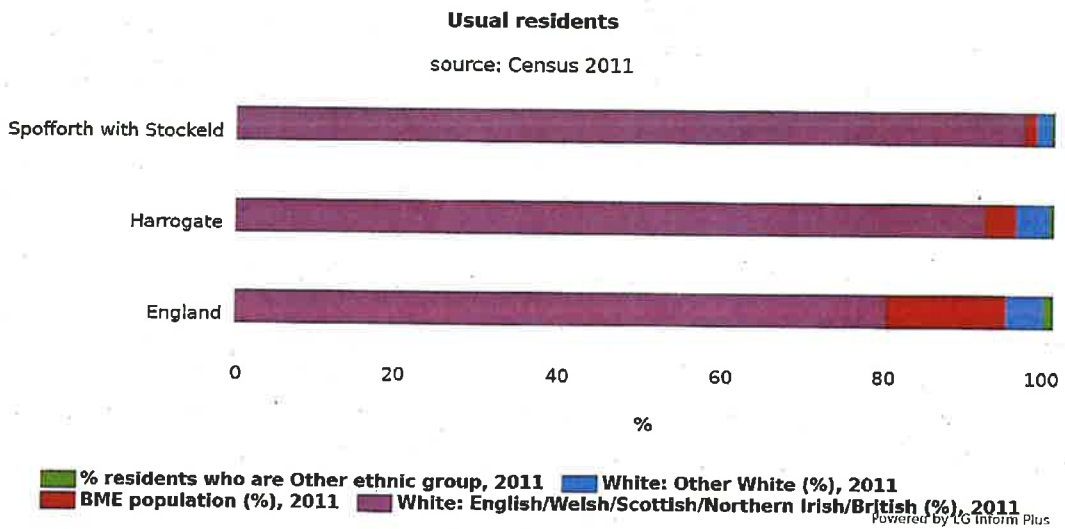
The gender balance of residents within the Spofforth with Stockeld ward is 52.7 % female and 47.3 % male. This compares to the Harrogate district average of 51.2 % female and 48.8 % male.



Powered by LG Inform Plus

Ethnicity

The ethnicity of residents in the Spofforth with Stockeld parish area is: 96.4 % white british, 1.4 % from black and minority ethnic groups, and 2.0 % from other white backgrounds. This compares to the Harrogate district average of: 91.7 % white british; 3.7 % black and minority ethnic groups; and 4.1 % other white backgrounds.



Powered by LG Inform Plus

Country of birth - % of resident population born outside the UK and Ireland

3.3 % of Spofforth with Stockeld residents were born outside the UK and Ireland compared to 5.2 % of residents across the district.

	Percentage of usual residents whose country of birth is: Other countries	Number of usual residents whose country of birth is: Other countries
	2011	2011
	%	People
Spofforth with Stockeld	3.3	38
Harrogate	5.2	8,242
England	9.4	4,961,698

Language

In 97.80 % of households in Spofforth with Stockeld , all adults speak English as their main language - this compares with 96.30 % of households across the district. In contrast, in 0.20 % of households in Spofforth with Stockeld no residents speak English as their main language - compared with 1.70 % of households across the district

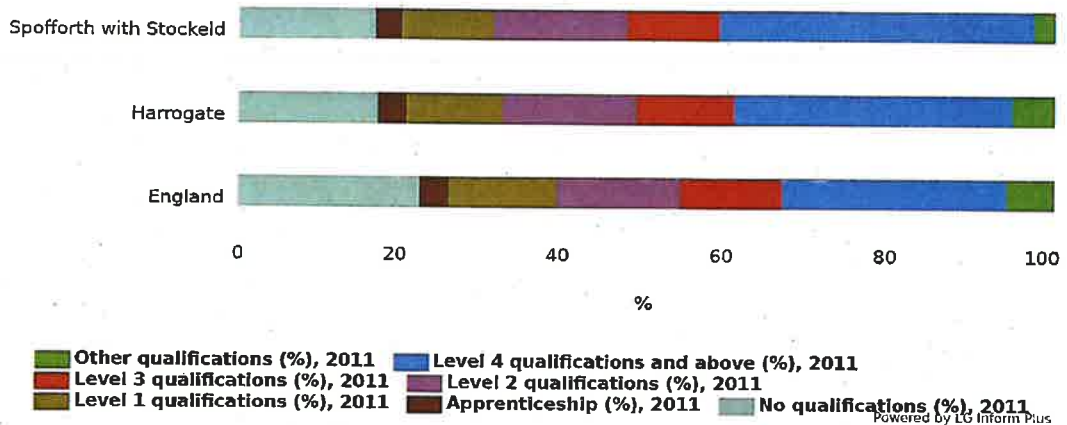
	All adults have English as main language (%)	No-one with English as main language (%)
	2011	2011
	%	%
Spofforth with Stockeld	97.80	0.20
Harrogate	96.30	1.70
England	90.90	4.40

Education

38.60 % of Spofforth with Stockeld residents have qualifications at Level 4 or higher compared to 34.10 % of residents across the district. At the other end of the spectrum 16.90 % of Spofforth with Stockeld residents have no qualifications compared to 17.30 % across the district.

Educational qualifications

source: Census 2011



Occupation

22.00 % of Spofforth with Stockeld residents were employed as managers, directors or senior officers and 20.20 % in professional occupations (traditionally higher paid jobs). Whilst 7.50 % of Spofforth with Stockeld residents were employed in care and leisure services, and 5.20 % in elementary occupations (which tend to pay lower wages).

	Spofforth with Stockeld	Harrogate	England
	2011	2011	2011
	%	%	%
Managers, directors and senior officials per cent	22.00	14.40	10.87
Professional occupations per cent	20.20	18.26	17.49
Associate professional and technical occupations per cent	14.40	14.34	12.79
Administrative and secretarial occupations per cent	8.30	10.70	11.46
Skilled trades occupations per cent	13.20	11.70	11.36
Caring, leisure and other service occupations per cent	7.50	9.03	9.33
Sales and customer service occupations per cent	7.20	7.35	8.42
Process, plant and machine operatives per cent	2.00	4.76	7.19
Elementary occupations per cent	5.20	9.46	11.10

Method of Travel to Work

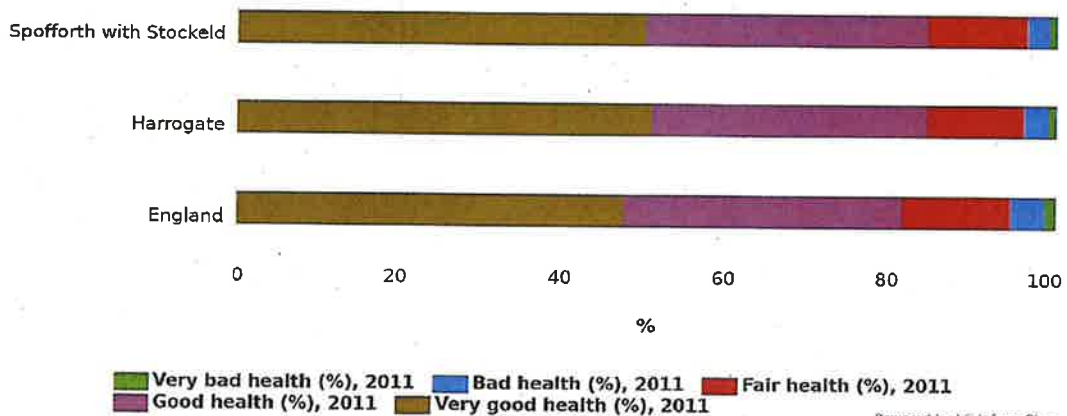
	Spofforth with Stockeld	Harrogate	England
	2011	2011	2011
	%	%	%
Travel to work on foot (% of pop. aged 16-74)	3.8	14.5	10.7
Travel to work by bicycle (% of pop. aged 16-74)	0.3	2.2	3.0
Travel to work by Bus, minibus or coach (% of pop. aged 16-74)	4.0	3.8	7.5
Travel to work by train (% of pop. aged 16-74)	2.2	2.5	5.3
Travel to work by driving a car or van (% of pop. aged 16-74)	69.9	61.9	57.0
Travel to work as a passenger in a car or van (% of pop. aged 16-74)	5.2	5.0	5.0
Travel to work by motorcycle, scooter or moped (% of pop. aged 16-74)	0.5	0.5	0.8
Travel to work by underground, metro, light rail, tram (% of pop. aged 16-74)	0.2	0.1	4.1
Work mainly at or from home (% of pop. aged 16-74)	13.4	8.5	5.4

Health

The chart below shows the percentage of people in Spofforth with Stockeld ward who reported their general health as very good, good, fair; bad or very bad in the 2011 census. The percentage of people in Spofforth with Stockeld reporting their health as bad or very bad is 3.5%, or 41 people. This includes 33 people who report their health as bad, and 8 people who report their health as very bad. This compares with 3.8% of residents across the Harrogate District who report their general health as bad or very bad.

Health of the population

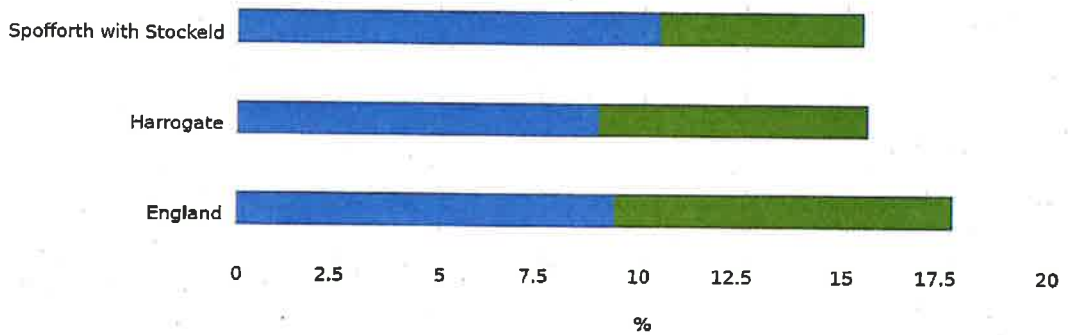
source: Census 2011



The chart below shows the percentage of people in Spofforth with Stockeld Parish who reported that their day to day activities are limited by a long term illness or disability. The percentage of people in Spofforth with Stockeld reporting their 'day to day activities limited a lot' is 5.0% (59 people). In addition, 10.4% (121 people) reported that their activities were limited 'a little'. This is 15.4 per cent of the population of Spofforth with Stockeld who say that their day to day activities are limited due to their health, affecting 180 people. This compares with 15.6% for the Harrogate District reporting their day to day activities are limited a little or a lot by their health.

Usual residents

source: Census 2011



■ Percentage of usual residents whose - Day-to-day activities limited a lot, 2011
■ Percentage of usual residents whose - Day-to-day activities limited a little, 2011

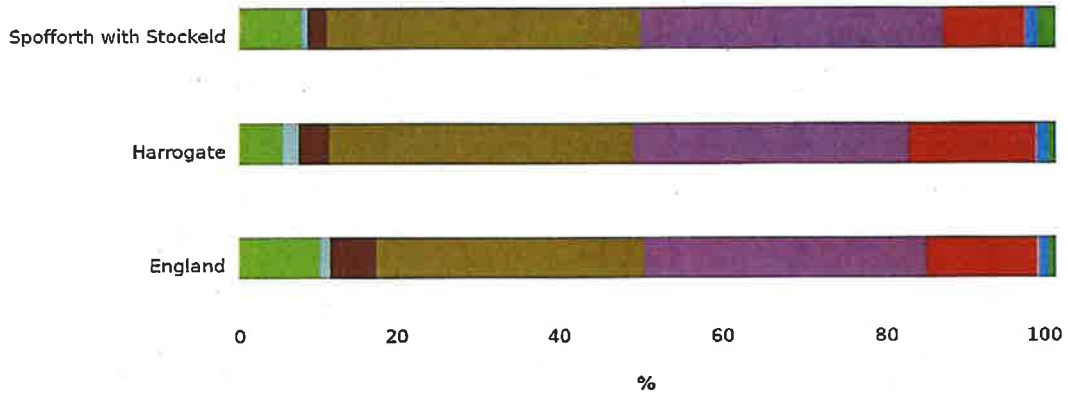
Powered By LG Inform Plus

Households and Tenure

Spofforth with Stockeld Civil parish/community and non-civil parished area has 510 households, which represents 0.76% of Harrogate's 67,169 households. The household split by tenure is shown below.

Households (Census)

source: Census 2011



- Households in shared ownership (%), 2011
- Households where occupiers living rent free (%), 2011
- Households rented from private landlord or letting agency (%), 2011
- Households owned with a mortgage or loan (%), 2011
- Households owned outright (%), 2011
- Households rented from other social landlords (%), 2011
- Households rented from other private owners (%), 2011
- Households rented from council or equivalent (%), 2011

Powered by LG Inform Plus

Housing stock: property type

	Spofforth with Stockeld	Harrogate	England
	2011	2011	2011
	%	%	%
Percentage: Terraced	16.4	20.0	24.5
Percentage: Semi-detached dwelling	32.4	30.1	30.7
Percentage: Detached dwelling	44.3	31.4	22.3
Percentage: Purpose-built block:flats or tenement	3.0	10.7	16.7
Percentage: Part: a converted or shared house	2.8	5.7	4.3
Percentage: In a commercial building	1.1	1.3	1.1
Percentage: caravans or other mobile/temporary structures	0.0	0.8	0.4

Housing stock: central heating

	Spofforth with Stockeld	Harrogate	England
	2011	2011	2011
	%	%	%
Households with no central heating - per cent	2.2	2.6	2.7

Household occupancy rating

In Spofforth with Stockeld 8 households have one bedroom too few and, a further 1 households have at least 2 bedrooms too few, for the number of members of that household. Therefore, these households can be considered to be overcrowded. In contrast, Spofforth with Stockeld has 387 households (75.9 %) that have at least two more bedrooms than would be sufficient - these households can be considered to be under-occupied.

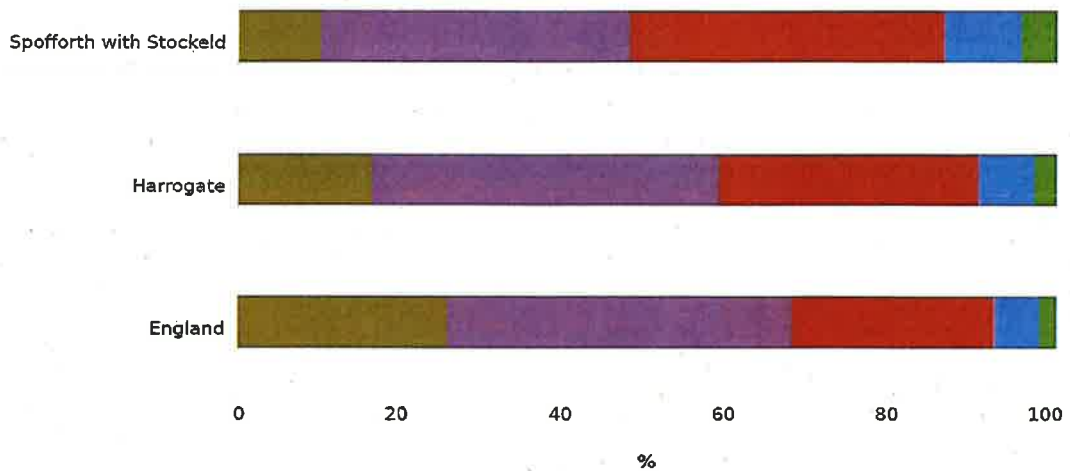
	Spofforth with Stockeld	Harrogate	England
	2011	2011	2011
	%	%	%
Occupancy rating +2 or more (%)	75.9	60.8	49.7
Occupancy rating +1 (%)	15.7	21.0	22.9
Occupancy rating 0 (%)	6.7	13.7	18.6
Occupancy rating -1 (%)	1.6	3.5	6.4
Occupancy rating -2 or less (%)	0.2	1.0	2.3

Vehicle ownership by household

In Spofforth with Stockeld 10.20 % of households do not own a car or van, compared to 16.40 % across the district.

Households owning cars or vans

source: Census 2011



4 or more cars or vans in household per cent, 2011
3 cars or vans in household per cent, 2011
2 cars or vans in household per cent, 2011
1 car or van in household per cent, 2011
No cars or vans in household per cent, 2011

Powered by LG Inform Plus

References

This report was generated using data from:

[Nomis: mid-year population estimates](#)

[Office for National Statistics: Census 2011](#)